

## Special Installation - Horizontal

Cut off the locking element with a chisel, put white glue (PVAc) on the adjusted strip and push the planks horizontally together. If necessary place some spacers between last board and the wall during the hardening time of the glue. This method can also be applied to the short ends.

## After the Installation

- Remove expansion spacers and install or reinstall base and/or quarter round moldings to cover the expansion space by **nailing to the wall, not the floor**.
- Install any transition pieces that may be needed (reducers, T-moldings, etc.). **Do not attach moldings to the newly installed floor.**
- Although Fortune LVT floors are waterproof, it is possible for moisture to reach the subfloor by seeping through the cracks at the edge of a room. This is especially true around bathtubs and other areas where splashing is likely. To prevent this from happening in these areas, caulk around the perimeter of the installation with 100% Silicone.

## Cleaning and Maintenance

- The floor should be cleaned regularly using a vacuum-cleaner (without beater brush) and/or broom.
- Spills should be cleaned up immediately.
- If required, mop with a damp mop and an approved vinyl floor cleaner according to directions. **Do not use** general purpose household cleaners, detergents, oils, soaps, ‘mop & shine’ products, wax, solvent-based polishes, or abrasive materials as these may damage and/ or dull the finish of the floor.
- Keep pets’ nails trimmed to minimize damage to the floor
- Rugs at entrance areas will help protect against sand and dirt. **Do not use** rubber or latex backed mats or rugs. Coco fiber mats can also stain or damage the surface of your floor and should not be used.
- Non-staining felt pads should be attached to furniture legs to avoid marking. Rolling casters are not recommended.
- Use shades or blinds to minimize the floor’s exposure to direct sunlight.
- Household temperatures should be maintained between 65-85 degrees Fahrenheit at all times.
- Sharp objects can damage the floor
- Do not slide heavy furniture or appliances across floor. Use something solid that will not move such as plywood as a runway, even when using a dolly or if the appliance has wheels.

## Warranty

Fortune Luxury Vinyl Tile warrants that your LVT flooring will not contain manufacturing defects and further warrants that under normal residential traffic conditions and use it’s Fortune LVT products will not delaminate, rip, fade, stain, or wear through for **25 years. If there is any question about the suitability of this products intended use, consult Fortune’s technical services department. Fortune Luxury Vinyl Tile is for indoor use only. This warranty does not cover wear or damage due to improper installation, cleaning, care or maintenance in a manner contrary to the instructions as provided by the manufacturer, physical abuse to or misuse of the product, accidents causing scratching, impact or cutting, freight damage, modification, alternations of either chemical or physical characteristics, repair or service of the product other than that performed by an authorized dealer, or any wear or damage caused by acts of God.** If Fortune accepts a claim under warranty, it will repair or replace at its option, the affected flooring material. This warranty covers repair and replacement of affected materials only; it does not cover associated labor costs. This warranty is non transferrable and extends only to the original owner/purchaser of the product and at the location of the original installation. This is an abbreviated version of the warranty terms. For the complete detailed warranty terms, please consult Fortune’s technical services department.

# INSTALLATION INSTRUCTIONS



**Tools Needed** - Spacers, Utility Knife, Tape Measure, L Square, and if necessary, a handsaw and tools for subfloor repair/preparation

**Storage and Acclimation** - Store your unopened floor packages flat, horizontal, and well spread out (no more than 6 boxes high) for at least 48 hours in a room with an average temperature between 18 and 22 degrees Celcius.

**Sub Floor** - All subfloors must be clean, dry, structurally sound, free from deflection, and level within 3/16” per 10’ radius. Any unevenness that will create empty space between the subfloor and the vinyl floor should be leveled out.

### Acceptable subfloor types:

**Wood** - if it meets the standard criteria above, it is acceptable for use as a subfloor. Wood subfloors should not be covered with plastic and can not lay directly on concrete. Suspended floors should have at least 18” of ventilated air space above ground and a moisture barrier should be place over crawl spaces.

**Concrete** - should be properly cured and allowed to dry for 60 days. Use cement compound to repair cracks and level.

**Sheet and Tile Flooring** – must be well bonded to sub floor, in good condition, clean and level. Do not install over multiple layers. Other tile such as ceramic may require a cement overlay to meet the level requirements mentioned above.

**Carpeting** and other soft or heavily cushioned material are **NOT** acceptable and must be removed.

**Underlayment** - Do not use a soft underlayment such as PE foam.

**Radiant-Heated Subfloors:** Follow the heating regulation recommendations given by the system supplier. The heating element should not come into direct contact with Fortune LVT and the maximum allowed surface temperature is 26°C. The heating system should be running for at least 2 weeks before installation and then turn the heating down to 15°C one week prior to installation. Do not turn off heating system if outside temperature is below freezing. Upon completion of installation, heating temperature may be increased gradually over a period of one week to the desired level.

## Installation Preparations:

**Floating Installation:** Your floor is made to be installed floating without being glued or nail down: Use spacing wedges to leave an open expansion gap of 1/4” around the perimeter and any fixed objects. The floor must be able to move freely – do not connect or install tight to any construction part. It is always recommended to install expansion spaces at door openings.

**Measure** the area to be installed making sure to take the perimeter **expansion requirement** of **1/4”** into account and:

**Define the Installation Direction** - It is recommended to install the length direction of the planks parallel to the main light direction. In narrow hallways, install the floor parallel to the length way.

**Calculate the Length of the Last Plank in the First Row** - if you determine the last plank in the first row is less than 11” long, cut your first plank to allow for the last plank to be 11”.

**Calculate the Width of the Last Row** - If the last row will be less than 2” wide, cut 2” off the width of the first row before installing to ensure the stability of the floor.

**Remove any existing base, shoe mold or doorway thresholds.**

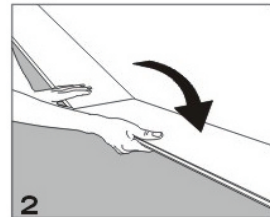
**Saw off the bottoms of doorjamb and trim** so that the flooring can be slipped under. To do this, use a scrap piece of flooring as a guide and with a hand saw cut off the jamb and trim.

**Installation:** Make sure you have read the entire instructions before installing



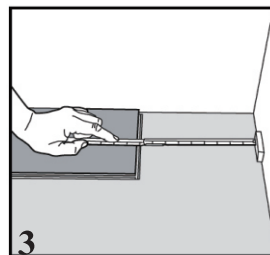
First Plank, First Row.

Begin laying the floor in the left hand corner. Place a 1/4" spacer against the left wall and position the plank against the spacer with the groove side exposed. We will concern ourselves with the distance to the front wall later.

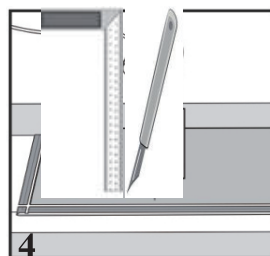


Second Plank, First Row.

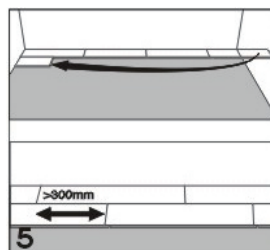
Press the next plank at an angle so the short side tongue aligns with the short side groove of the first plank. Then lay down. Continue the first row like this.



At the end of the first row, put a 1/4" spacer against the wall and measure to get the length needed for the last plank.



To cut, align an L square squarely to the board at the mark where you would like to cut. Run a utility knife along the edge of the L square to "score" the plank where you marked it. Then simply bend to "snap" along the score line. Run knife along fold line to separate into 2 pieces.

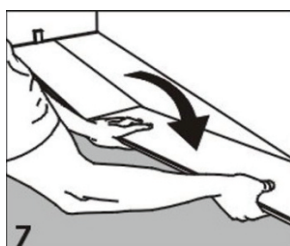


Second Row.

Use the remaining part of the first row's last plank as the first plank of the second row if it is at least 11". If it's not, cut a plank in half and use it instead. Always ensure that the end joints are staggered at least 11" long.

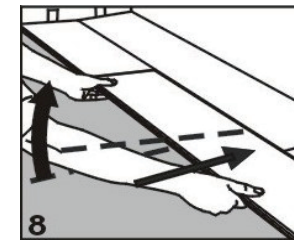


Place the plank at an angle against the plank in the first row, press forward and fold down at the same time. Leave the plank in a somewhat up angled position where the planks start to lock. To make this easier, a wedge with the suitable width can be placed under the plank near the short side.

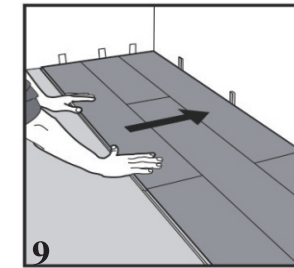


Second Plank, Second Row.

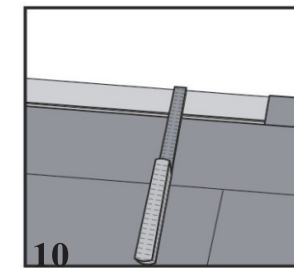
Place the short end of the plank at an angle against the previous installed plank and fold down.



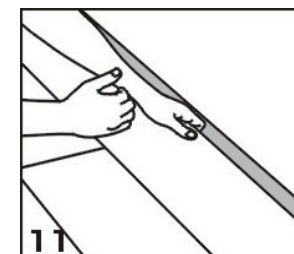
Lift plank together with the previous laid in the same row up a little over an inch and push it against the row in front. Put it down when the planks are tightly together. Continue this for three rows.



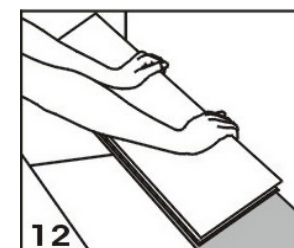
Adjust the distance to the walls when three rows are completed. Using spacers, place the flooring 1/4" from the walls. Keep the spacers in the entire installation and remove when complete.



If the wall is uneven, the planks must be adapted to its contours. Mark the planks with the contour of the wall. Do not forget to leave a 1/4" space to the wall. This procedure can also be used for the first row if necessary.



To remove the first row, lift the plank a few centimeters and tap along the joint. Cut the planks as required.



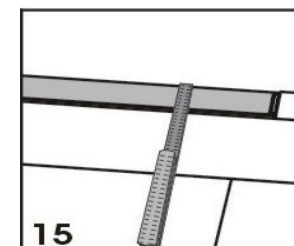
If necessary, re-lay the first row from left to right. Press the first board against the edge of the planks that are already in position.



If you wish to remove the flooring, just lift the planks a few centimeters and tap along the joint.



The Released plank can then be pulled out.



Measure and cut the last row to size. Allow for 1/4" expansion in your measurement.